



BOXING
SCIENCE

**TRAINING &
CONSULTANCY**

MASTER THE THINGS THAT TAKE NO TALENT

- 03. About
- 04. Our team
- 05. Testing and consultancy
- 06. Nutritional assessments
- 07. Nutrition services
- 08. Remote consultancy
- 09. Testimonials
- 10. Packages and pricing
- 11. Packages and pricing

THE BLUEPRINT TO ELITE PERFORMANCE



Boxing Science provides cutting-edge training to boxers and combat athletes worldwide; we are at the forefront of academic research in combat sports and deliver educational programmes to boxers and coaches using our insights from elite performance and pioneering research.

Our sport science practitioners have over 25 years of experience from grass-roots to elite performance, and we are proud to have worked with hundreds of professional and amateur boxers, including World, International, Commonwealth, European, British and regional champions.

We have developed our unique insights into the preparation of boxers through rigorous scientific exploration of the key factors that underpin boxing performance. Our physical performance tests enable us to identify the characteristics required for successful performance and analyse these in detail on an individual level. This scientific approach helps us to plan and deliver training programmes with precision and unlock an athlete's potential.

This brochure highlights our services and consultancy packages available to any level of combat athlete, whether you are local, within the UK or international. Wherever you are in the world, and whatever standard you may be, we can provide a bespoke training package to get 100% out of your training and improve your physical performance.

OUR TEAM



DANNY WILSON

Co-Founder | S&C Coach

Danny is a UKSA accredited strength and conditioning coach with a wealth of world level experience. He has coached 100's of boxers, from World Champion professional to junior amateur boxers. Danny has an MSc in Sport and Exercise Science, and developed the Boxing Science strength and conditioning programme.



ALAN RUDDOCK

Co-Founder | Performance Physiologist

Alan has a PhD in sport science from Sheffield Hallam University, UK and is a Fellow of the British Association of Sport and Exercise Sciences. Dr Ruddock has worked with Olympians, Paralympians and World Champions in a range of sports for over 10 years and provided sport science support to boxers in more than 15 world-title fights.



LEE RICKARDS

Performance Nutritionist

Lee is a performance nutritionist who works in professional football and boxing. He is a practitioner registrant of the sport and exercise nutrition register (SENr), ISAK accredited to perform accurate body composition testing, and has an MSc in Sport and Exercise Science. Lee is undertaking a PhD in the use of polyphenols and exercise induced muscle damage.

TESTING & CONSULTANCY



Our world-class testing packages give you the precise details to help inform your training programme, set goals and monitor progress. This is ideal for any fighter looking to get 100% out of their training.

STRENGTH PROFILING

Strength training is a crucial aspect of a boxers physical preparation. Our strength testing provides boxers with a unique insight into force development that is used to inform strength training and improve physical performance.

MOVEMENT SCREEN

Boxers need excellent movement capabilities to transfer force from foot to fist. Our movement screening highlights areas for improvement in movement and mobility that enables us to select exercises to optimise force development.

PUNCH ASSESSMENTS

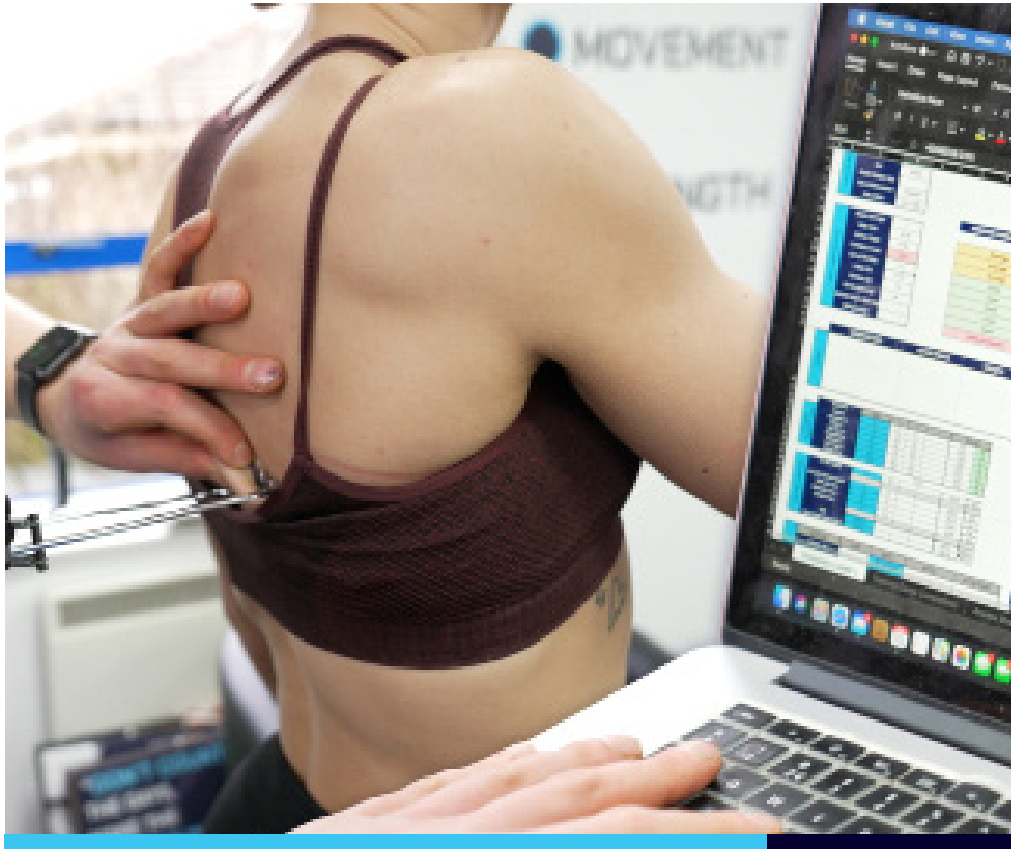
Our unique punch-velocity profile developed at Boxing Science allows us to assess your punch force and give you an insight into how we can train your ability to deliver effective punches.

BODY COMPOSITION

The amount of lean tissue and its distribution throughout your body is a key factor for performance. Our body composition analysis combines skinfold assessments with Bioimpedance Spectroscopy to give you an accurate picture of your current body composition.

FITNESS TESTING

Fitness is an essential component of boxing performance. Our fitness tests enable us to analyse your physiology and determine the most effective type of conditioning specifically for you.



Ensuring you're fueled using the nutrient-rich foods at the right time is an essential component of your performance.

Our nutritional assessments provide you with a comprehensive insight into your nutritional status enabling you optimise your training adaptations.

NUTRITIONAL ASSESSMENTS

— BODY COMPOSITION ANALYSIS

The amount of lean tissue and its distribution throughout your body is a key factor for performance. Our body composition analysis combines skinfold assessments with Bioimpedance Spectroscopy to give you an accurate picture of your current body composition.

— RMR ASSESSMENTS

Our assessment of resting metabolic rate provides the foundation for your nutritional recommendations by understanding how much energy you use at rest.

— DIET ANALYSIS

Our diet analysis provides us with an insight into what you eat and when so that we can make tailored nutritional recommendations to fuel your training and improve your performance.

— BLOOD PROFILES & SWEAT TESTS

Used in conjunction with your diet analysis we can identify the aspects of your diet that need targeting to improve your vitamin and mineral status. Our sweat tests allow us to investigate your sweat rate to ensure you meet your fluid demands.

NUTRITION SERVICES

INDIVIDUAL DIETS

Diets are not just simply a 'one size fits all' approach. Boxers require individualised nutrition to optimise their results, fuel their performance and 'make weight' safely. The individual nutrition support will be tailored to the athletes physical profile and training schedule.

BODY COMPOSITION

Further to the nutrition testing, it's important to have regular body composition assessments to monitor progress and make necessary adjustments to nutritional strategies.

WEEKLY CHECK-INS

We understand that schedules may change and that there are certain 'sticking points' when reducing body mass. That's why we offer a weekly check-in service to help adjust the plan accordingly and offer that reassurance.

FIGHT-WEEK DIET PLANS

Acute body mass manipulations can be effective in helping an athlete make weight safely whilst feeling energised during fight week. We support you from the scale s to th e r i n g with an effective refuel and pre- fight nutrition strategy to optimise performance.



It's not just about making weight. Effective nutritional strategies are required to help reduce body mass progressively throughout the camp. This will help reduce body fat, preserve lean tissue mass and fuel performance.

We're with you every step of the way with our regular contact, weekly check-ins and fight week strategies.

REMOTE CONSULTANCY

INDIVIDUAL PROGRAMMING

Using your test results, we structure a programme that is suited to your individual athletic profile and current training goals. We'll integrate strength training and high-intensity conditioning sessions within your boxing training schedule.

We'll create a periodised training plan to target the required adaptations identified through testing and structure progressive overload and deload periods. This will help optimise the results from each training block, avoid overtraining and enable you to reach peak performance on fight night.

TRAINING EXPERIENCES

Athletes can visit the Boxing Science Performance Centre and train with our team to kickstart the training program or at various stages of camp. This will help athletes get a detailed understanding of the sessions and exercise techniques required in their remote programme.

REMOTE COACHING

Our team can be accessed 24/7, with direct messages and weekly check ins. We can adjust the programme for changes in the training schedule, and offer coaching on exercise videos to make sure the programme is being executed with precision.



TESTIMONIALS



“

Boxing Science has been a massive part of my development as an athlete and a fighter, The training is forever evolving and I am consistently improving in my strength, speed, movement and fitness, which is vital when I step up through the levels.

JORDAN GILL**Professional Featherweight Boxer**

“

The remote programme ticks all the boxes. The program is clear to understand and the team is approachable if I need help or any adaptations to the schedule. From a performance perspective I've never felt better! I have gained muscle mass, but I have the fitness and speed to match it.

FABIO WARDLEY**Professional Heavyweight Boxer**

“

Boxing Science have transformed my outlook on training, I have learnt so much and made massive improvements in just a short amount of time. The training has given me the confidence that I can push through the gears and have the ability to out strength my opponents.

TERRI HARPER**Professional Lightweight Boxer**

PACKAGES

SPORT SCIENCE TESTING + REMOTE CONSULTANCY

SPORT SCIENCE TESTING

Movement Analysis
Strength + Speed and Punch Assessments
Load-Velocity Profile
Advanced Body Composition
Physiological Assessments
Advanced Feedback and Analysis

£320 per person

SPORT SCIENCE TESTING - TEAMS (3-4 PEOPLE)

Movement Analysis
Strength, Speed and Punch Assessments
Load-Velocity Profiles
Body Composition
Physiological Assessments
Feedback and Analysis

£600 per group

Save £680

REMOTE CONSULTANCY

Sports Science Testing Package
1 x S&C Session
2 x Phased 10-Week Program
Fight Week Program
Remote Support & Contact for 10 Weeks

£600 per person

Enquire about Group Packages

BOXING SCIENCE TRAINING DAYS

Our Boxing Science training days are hugely popular and have attracted athletes from all over the UK to take part in a day of testing, training and education. This is the perfect way to start a Boxing Science program and is ideal for groups of 3-6 Amateur and Professional athletes.

Please enquire for more details on pricing and availability.



NUTRITION SUPPORT (10-WEEK PACKAGE)**ONLINE BESPOKE PROGRAM**

Basic Nutritional Assessment x 1 (£150)
3-Phase Diet Plan to fit your Training Schedule (£300)
Fight Week Guidance

£400 per person**BESPOKE PROGRAM + TESTING**

Basic Nutritional Assessment x 1 (£150)
3-Phase Diet Plan to fit your Training Schedule (£300)
Fight Week Guidance

£600 per person**ADVANCED NUTRITION SUPPORT****PRO NUTRITION SUPPORT**

Advanced Nutritional Assessments x 1
Bespoke Nutritional Program
Regular Contact
Weekly Phone / Video Calls
Testing Package Included

£300 per month**ELITE NUTRITION SUPPORT**

Advanced Nutritional Assessments x 2
Bespoke Nutritional Program
Daily Contact
Meal Prep Sessions and Fight Week Nutrition
Testing Package Included

£500 per month

FOR ENQUIRES E-MAIL DANNY @ DANNYWILSON@BOXINGSCIENCE.CO.UK



TRAINING & CONSULTANCY

These packages highlight the testing, consultancy and training packages available to any level of combat athlete, no matter if you are located within the UK or internationally. Wherever you are in the world, and whatever standard you may be, we can provide a bespoke training package to get 100% out of your training and improve your physical performance. To learn more about our packages and pricing please email our team at info@boxingscience.co.uk.

Office Suite 3. Maple House. Unit 4. Maple Court. Tankersley. Barnsley. S75 3DP
Email: info@boxingscience.co.uk